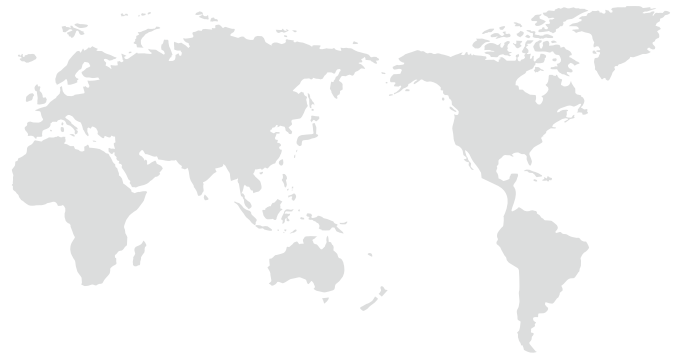
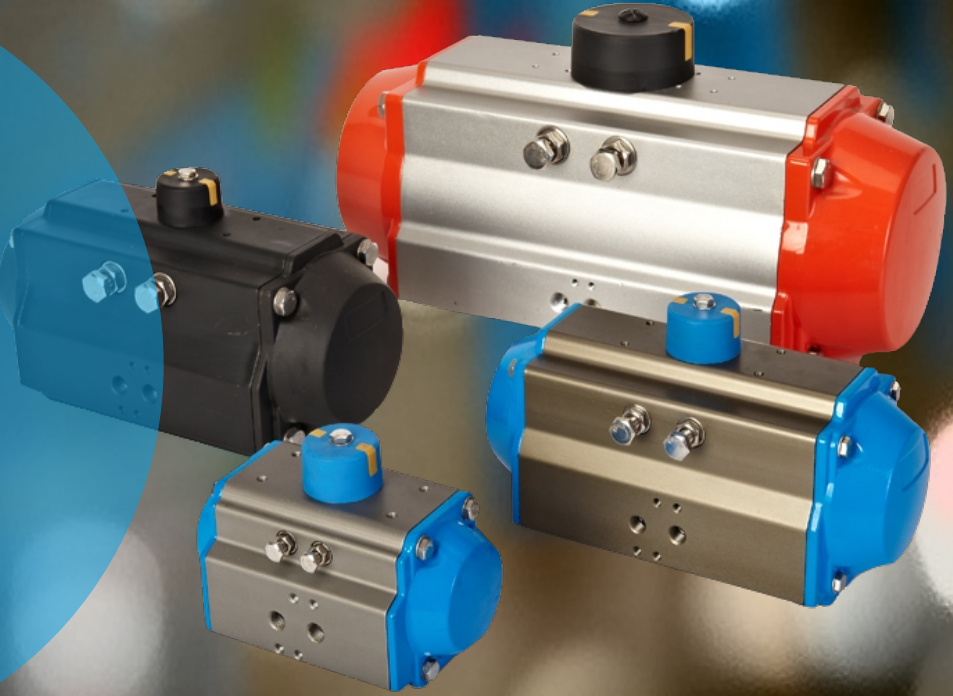


메가텍 자동밸브

MEGATEC

PNEUMATIC ACTUATOR AT SERIES



MEGATEC specialises in actuators and flow control solutions. Our commitment to quality, innovation and service has made MEGATEC a supplier of choice for industry professionals around the globe. Our pneumatic/electric actuator and API/Sanitary valves, are specified in a wide range of applications.





Pneumatic 3PC Threaded Ball Valve

Medium Temp : $-20^{\circ}\text{C} \sim +180^{\circ}\text{C}$
 Ambient Temp : $-20^{\circ}\text{C} \sim +60^{\circ}\text{C}$
 Nominal Pressure : 1.0~4.0MPa
 Control Air : Air
 Air Supply Pressure : 0.3~0.8MPa
 Size : 1/2" - 4"
 Valve Body : CF8 CF8M
 Valve Seat : PTFE
 Valve Stem : 304
 Sealing O Ring : NBR



Pneumatic 2PC Flanged Ball Valve

Medium Temp : $-20^{\circ}\text{C} \sim +180^{\circ}\text{C}$
 Ambient Temp : $-20^{\circ}\text{C} \sim +60^{\circ}\text{C}$
 Nominal Pressure : 1.0~1.6MPa
 Control Air : Air
 Air Supply Pressure : 0.3~0.8MPa
 Size : DN15-DN200
 Valve Body : WCB CF8 CF8M
 Valve Seat : PTFE
 Valve Stem : 304
 Sealing O Ring : NBR



Pneumatic 3 Way Threaded Ball Valve

Medium Temp : $-20^{\circ}\text{C} \sim +180^{\circ}\text{C}$
 Ambient Temp : $-20^{\circ}\text{C} \sim +60^{\circ}\text{C}$
 Nominal Pressure : 1.0~4.0MPa
 Control Air : Air
 Air Supply Pressure : 0.3~0.8MPa
 Size : 1/2" - 2"
 Valve Body : CF8 CF8M
 Valve Seat : PTFE
 Valve Stem : 304
 Sealing O Ring : NBR



Pneumatic UPVC Union Ball Valve

Medium Temp : $-20^{\circ} \sim +80^{\circ}$
 Ambient Temp : $-20^{\circ} \sim +60^{\circ}$
 Nominal Pressure : 1.0~1.0MPa
 Control Air : Air
 Air Supply Pressure : 0.3~0.8MPa
 Size : DN15-DN100
 Valve Body : UPVC
 Valve Seat : PTFE
 Valve Stem : UPVC
 Sealing O Ring : NBR



Pneumatic 3-Way Clamped Ball Valve

Medium Temp : $-20^{\circ} \sim +180^{\circ}$
 Ambient Temp : $-20^{\circ} \sim +60^{\circ}$
 Nominal Pressure : 1.0~1.0MPa
 Control Air : Air
 Air Supply Pressure : 0.3~0.8MPa
 Size : $\Phi 19 - \Phi 102$
 Valve Body : CF8 CF8M
 Ball : CF8M
 Valve Seat : PTFE
 Valve Stem : 304
 Sealing O Ring : NBR



Pneumatic 3PC Flanged Ball Valve

Medium Temp : $-20^{\circ}\text{C} \sim +425^{\circ}\text{C}$
 Ambient Temp : $-20^{\circ}\text{C} \sim +60^{\circ}\text{C}$
 Nominal Pressure : 1.0~42.0MPa
 Control Air : Neutral Gas, Air
 Air Supply Pressure : 0.3~0.8MPa
 Size : DN50~DN250
 Valve Body : A105 F304 F316
 Ball : 13Cr SS304/316
 Valve Seat : STL
 Valve Stem : F6a F304

PNEUMATIC ACTUATOR AT SERIES



Pneumatic UPVC Wafer Butterfly Valve

Medium Temp : -20°C ~+80°C
 Ambient Temp : -20°C ~+60°C
 Nominal Pressure : 1.0~1.0MPa
 Control Air : Air
 Air Supply Pressure :0.3~0.8MPa
 Size :DN50-DN300
 Valve Body :UPVC
 Valve Disc :UPVC
 Valve Seat :EPDM NBR
 Valve Stem :304
 Sealing O Ring :NBR



Pneumatic V Type Wafer Ball Valve(Segment)

Medium Temp : -20°C ~+180°C
 Ambient Temp : -20°C ~+60°C
 Nominal Pressure : 1.0~1.6MPa
 Control Air : Air
 Air Supply Pressure :0.3~0.8MPa
 Size :DN25-DN250
 Valve Body :CF8 CF8M
 Ball : CF8 CF8M
 Valve Seat :PTFE STL
 Valve Stem :304
 Sealing O Ring :NBR



Pneumatic Wafer Butterfly Valve

Medium Temp : -20°C ~+150°C
 Ambient Temp : -20°C ~+60°C
 Nominal Pressure : 1.0~1.6MPa
 Control Air : Air
 Air Supply Pressure :0.3~0.8MPa
 Size :DN40-DN300
 Valve Body :Cast Iron
 Valve Disc :WCB CF8 CF8M
 Valve Seat :PTFE EPDM NBR FPM
 Valve Stem :304
 Sealing O Ring :NBR



Pneumatic Welded Butterfly Valve

Medium Temp : -20° ~+120°
 Ambient Temp : -20° ~+60°
 Nominal Pressure : 1.0~1.0MPa
 Control Air : Air
 Air Supply Pressure :0.3~0.8MPa
 Size :Φ 19- Φ 1219
 Valve Body :304 316
 Valve Disc :CF8 CF8M
 Valve Seat :EPDM NBR FPM
 Valve Stem :304
 Sealing O Ring :NBR



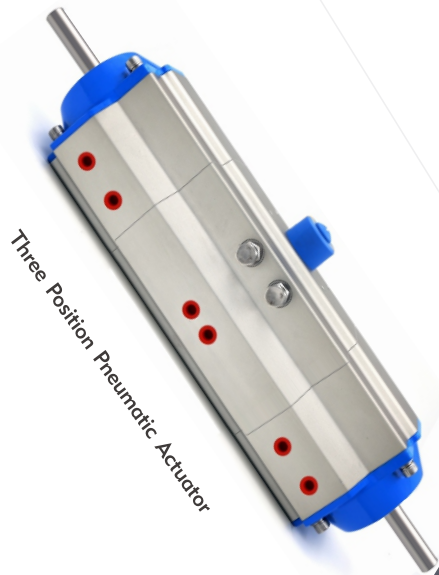
Pneumatic Flanged Butterfly Valve

Medium Temp : -20°C ~+420°C
 Ambient Temp : -20°C ~+60°C
 Nominal Pressure : 1.6 MPa
 Control Air : Neutral Gas Air
 Air Supply Pressure :0.3~0.8MPa
 Size :DN50~DN1000
 Valve Body :WCB SS304 Cf8 CF8M
 Valve Disc :Ss304 SS316
 Valve Seat : EPDM PTFE
 Valve Stem :F6a F304



Pneumatic Lined Butterfly Valve

Medium Temp : -20°C ~+150°C
 Ambient Temp : -20°C ~+60°C
 Nominal Pressure : 1.6MPa
 Control Air : Neutral Gas, Air
 Air Supply Pressure :0.3~0.8MPa
 Size :DN40~DN300
 Valve Body :Cast Iron Ductile Iron
 Valve Disc :WCB CF8 CF8M
 Valve Seat : EPDM PTFE FPM
 Valve Stem :F6a F304
 Control Features: Open/Closing Adjusting



DR00015-05000 120° / 180°
Double Acting Actuators

PNEUMATIC
ACTUATOR
AT SERIES



RT Series Stainless Steel
Pneumatic Actuator



Can be equipped with a standard line
VID/VIE3845 Valve Positioner



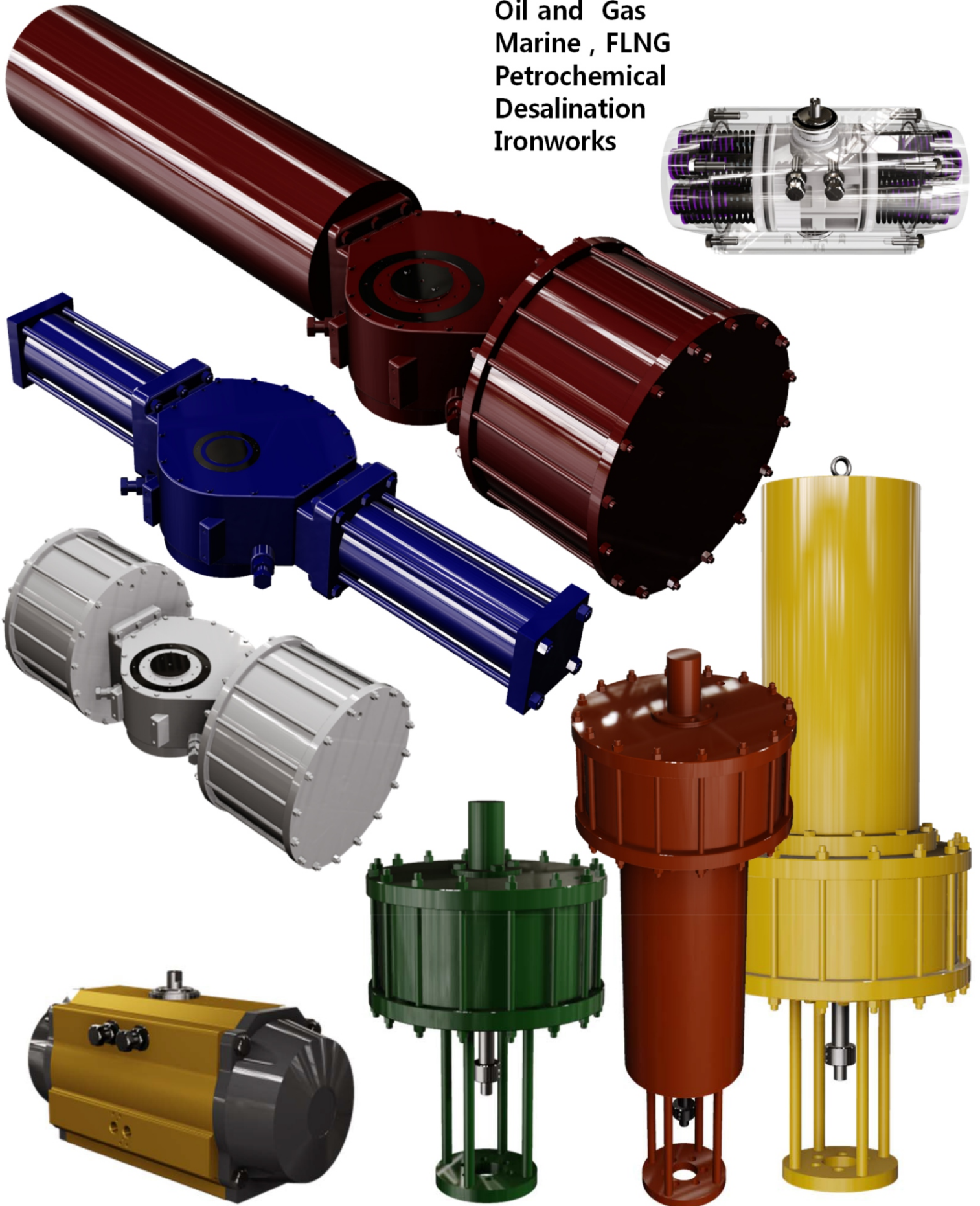
Can be equipped with line VID/VDE3845,
NAMUR Standard Solenoid Valve

MEGATEC

Actuator Specialist

Pneumatic and Hydraulic Actuator
for

Power Generation
Water and Sewage
Oil and Gas
Marine , FLNG
Petrochemical
Desalination
Ironworks





Electric 3PC Ball Valve(Thread)

Medium Temp : -20°C ~+180°C
 Ambient Temp : -20°C ~+60°C
 Nominal Pressure : 0~4.0MPa
 Voltage:AC110V,AC220V,AC380V,DC24V
 Size :1/2" -4"
 Valve Body :CF8 CF8M
 Valve Seat :PTFE
 Valve Stem :304
 Features: Opening/Closing,Controlling



Electric 3-Way Ball Valve

Medium Temp : -20°C ~+180°C
 Ambient Temp : -20°C ~+60°C
 Nominal Pressure : 0~1.0MPa
 Voltage :AC110V,AC220V,AC380V,DC24V
 Size : Φ 19 – Φ 102
 Valve Body :CF8 CF8M
 Valve Seat :PTFE
 Valve Stem :304
 Features: Opening/Closing,Controlling



Electric 2PC Ball Valve(Flange)

Medium Temp : -20°C ~+180°C
 Ambient Temp : -20°C ~+60°C
 Nominal Pressure : 0~1.6MPa
 Voltage :AC110V,AC220V,AC380V,DC24V
 Size :DN15-DN200
 Valve Body :CF8 CF8M
 Valve Seat :PTFE
 Valve Stem :304
 Features: Opening/Closing,Controlling

ELECTRIC ACTUATOR SERIES



Electric V-Type Ball Valve

Medium Temp : $-20^{\circ}\text{C} \sim +180^{\circ}\text{C}$

Ambient Temp : $-20^{\circ}\text{C} \sim +60^{\circ}\text{C}$

Nominal Pressure : $0 \sim 1.6\text{MPa}$

Voltage : AC110V, AC220V, AC380V, DC24V

Size: DN25–DN250

Body: CF8 CF8M

Seat: PTFE / STL

Stem: SS304

Features: Opening/Closing, Controlling



Electric Wafer Butterfly Valve

Medium Temp : $-20^{\circ}\text{C} \sim +150^{\circ}\text{C}$

Ambient Temp : $-20^{\circ}\text{C} \sim +60^{\circ}\text{C}$

Nominal Pressure : $0 \sim 1.0\text{MPa}$

Voltage: AC110V, AC220V, AC380V, DC24V

Size : DN50–DN300

Valve Body : Cast Iron

Valve Disc : WCB CF8

Valve Seat : EPDM NBR FPM

Valve Stem : 304

Features: Opening/Closing, Controlling



Electric Welded Butterfly Valve

Medium Temp : $-20^{\circ}\text{C} \sim +150^{\circ}\text{C}$

Ambient Temp : $-20^{\circ}\text{C} \sim +60^{\circ}\text{C}$

Nominal Pressure : $0 \sim 1.0\text{MPa}$

Voltage: AC110V, AC220V, AC380V, DC24V

Size : $\Phi 19 - \Phi 152$

Valve Body : CF8 CF8M

Valve Disc : CF8 CF8M

Valve Seat : EPDM NBR FPM

Valve Stem : 304

Features: Opening/Closing, Controlling

메가텍 자동밸브

MEGATEC

ELECTRIC ACTUATOR SERIES



메가텍
MEGATEC CO., LTD.

서울사무실
본사 및 공장

서울시 금천구 시흥대로 97 19동 202호
경기도 안산시 단원구 만해로 205 타원타크라3차 B동 505호

전화 02 896 8800
팩스 02 896 8883
이메일 info@kst-korea.com
홈페이지 www.kst-korea.com